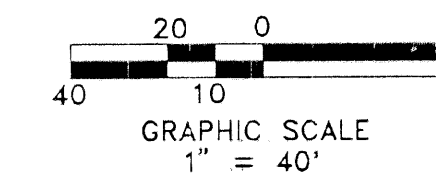


# PLAT OF CONGRESS LAKES

BEING A PORTION OF SECTION 31, TOWNSHIP 42 SOUTH,  
RANGE 43 EAST, CITY OF RIVIERA BEACH, PALM BEACH COUNTY, FLORIDA  
AND BEING A RE-PLAT OF A PORTION OF "CONGRESS PARK HOMES" ACCORDING  
TO THE PLAT THEREOF, AS RECORDED IN PLAT BOOK 52 PAGES 199 & 200  
PUBLIC RECORDS OF PALM BEACH COUNTY, FLORIDA.

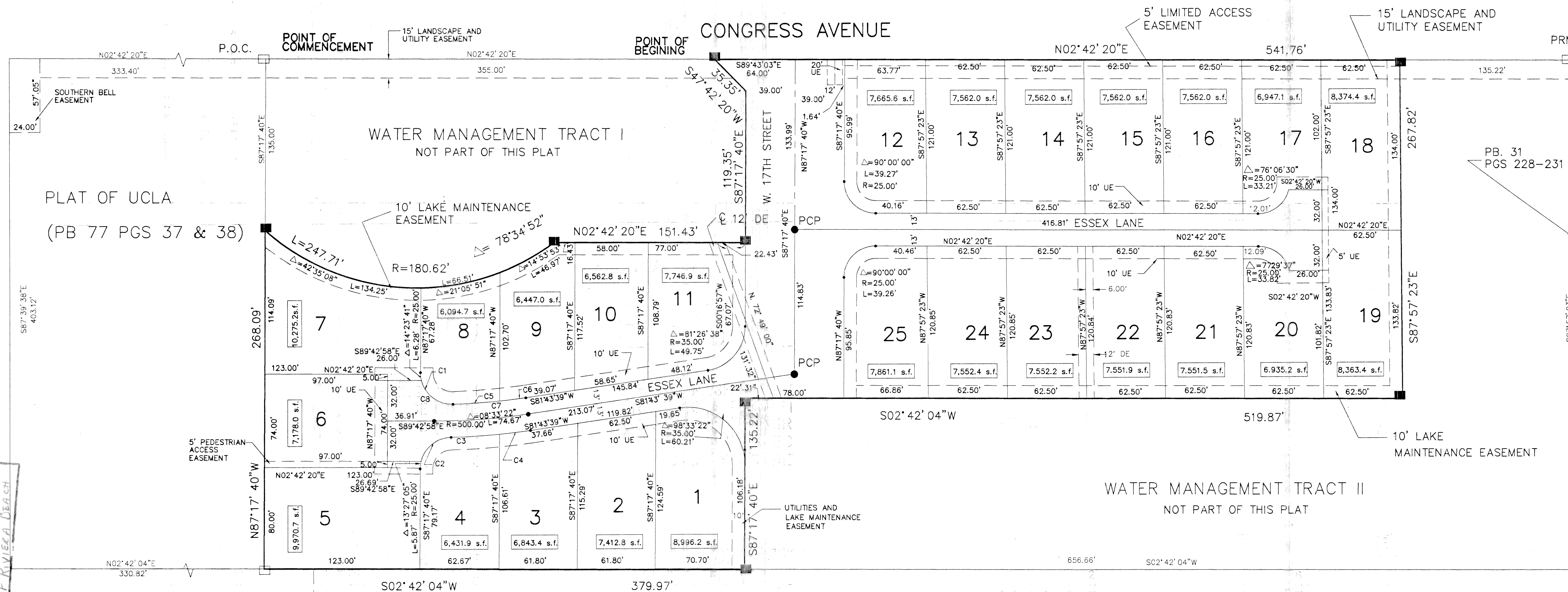
# 99

STATE OF FLORIDA }  
COUNTY OF PALM BEACH }  
THIS PLAT WAS FILED FOR RECORD AT  
THIS DAY OF  
A.D. 1996 AND DULY  
RECORDED IN PLAT BOOK \_\_\_\_\_ ON  
PAGES \_\_\_\_\_ THROUGH \_\_\_\_\_  
DOROTHY H. WILKEN  
CLERK OF THE CIRCUIT COURT  
BY: \_\_\_\_\_ DEPUTY CLERK



SEPTEMBER 1996

SHEET 2 of 2



SUBDIVISION: CONGRESS LAKES  
BOOK: 79  
PAGE: 99  
FLOOD ZONE: FLOOD MAP  
GUAD: ZONING  
SE: ZIP CODE  
CITY: RIVIERA BEACH

BARBARA PARK  
PB 44 PG. 47

CURVE	RADIUS	LENGTH	TANGENT	CHORD	EXTERNAL	DELTA
C1	25.00'	40.03'	25.77'	35.89'	10.91'	91°44'52"
C2	25.00'	38.62'	24.36'	34.89'	9.91'	88°29'57"
C3	513.00'	38.42'	19.22'	38.41'	0.36'	47°7'26"
C4	513.00'	24.76'	12.38'	24.76'	0.15'	02°45'54"
C5	487.00'	39.15'	19.59'	39.14'	0.39'	4°36'22"
C6	487.00'	18.72'	9.36'	18.72'	0.09'	2°12'08"
C7	487.00'	57.87'	28.97'	57.84'	0.86'	6°48'30"
C8	25.00'	33.75'	20.01'	31.25'	7.02'	77°21'12"

UNPLATTED

- LEGEND:
- P.R.M. PERMANENT REFERENCE MONUMENT
  - DELTA ANGLE
  - R RADIUS
  - L ARC LENGTH
  - C CENTERLINE
  - 42nd FORTY-SECOND
  - N NORTH
  - S SOUTH
  - E EAST
  - W WEST
  - 8,363.4 s.f. DENOTES LOT SQUARE FOOTAGE TOTAL
  - UE UTILITY EASTMENT
  - DE DRAINAGE EASTMENT

THIS INSTRUMENT PREPARED BY:  
WILLIAM D. O'CONNOR, P.S.&M.,  
IN & FOR THE OFFICE OF:  
JAMES E. NEUHAUS, INC.,  
11911 U.S. HIGHWAY ONE, SUITE 120  
PALM BEACH GARDENS, FLORIDA 33408  
(407) 622-1300